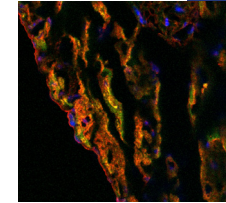
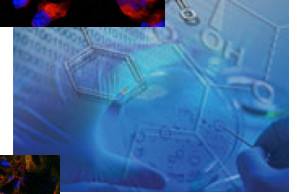
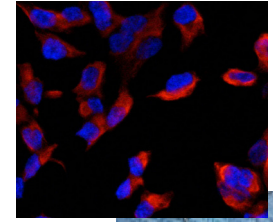




Center for Cancer Research Fellows and Young Investigators

12th CCR-FYI Colloquium



Outstanding Postdoctoral Fellow

is awarded to

Junfang Ji



March 26–27, 2012

Natcher Conference Center, NIH Bethesda Campus



Kristin Fabre, Ph.D., M.P.H.
Chair, CCR-FYI Steering Committee

Jonathan S. Wiest, Ph.D.
Director for Training and Education
Center for Cancer Research

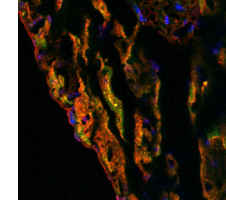
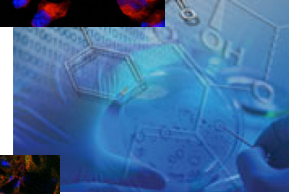
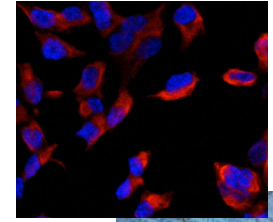
Supported by the CCR Office of the Director

U.S. DEPARTMENT OF HEALTH AND HUMAN SERVICES • National Institutes of Health



Center for Cancer Research Fellows and Young Investigators

12th CCR-FYI Colloquium



Travel Award

Outstanding Post Graduate Trainee

is awarded to



March 26–27, 2012

Natcher Conference Center, NIH Bethesda Campus



Kristin Fabre, Ph.D., M.P.H.
Chair, CCR-FYI Steering Committee

Jonathan S. Wiest, Ph.D.
Director for Training and Education
Center for Cancer Research

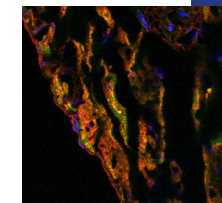
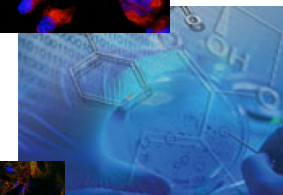
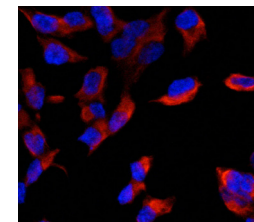
Supported by the CCR Office of the Director

U.S. DEPARTMENT OF HEALTH AND HUMAN SERVICES • National Institutes of Health



Center for Cancer Research Fellows and Young Investigators

12th CCR-FYI Colloquium



Travel Award

Outstanding Poster Presentation

is awarded to



March 26–27, 2012

Natcher Conference Center, NIH Bethesda Campus



Kristin Fabre, Ph.D., M.P.H.
Chair, CCR-FYI Steering Committee

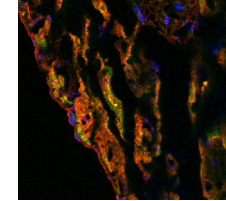
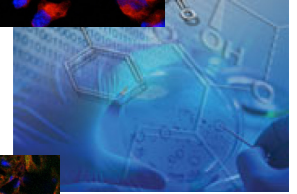
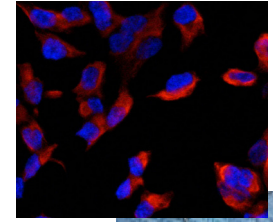
Jonathan S. Wiest, Ph.D.
Director for Training and Education
Center for Cancer Research

Supported by the CCR Office of the Director

U.S. DEPARTMENT OF HEALTH AND HUMAN SERVICES • National Institutes of Health



Center for Cancer Research Fellows and Young Investigators



12th CCR-FYI Colloquium

Travel Award

Outstanding Oral Presentation

is awarded to



March 26–27, 2012

Natcher Conference Center, NIH Bethesda Campus



Kristin Fabre, Ph.D., M.P.H.
Chair, CCR-FYI Steering Committee

Jonathan S. Wiest, Ph.D.
Director for Training and Education
Center for Cancer Research

Supported by the CCR Office of the Director

U.S. DEPARTMENT OF HEALTH AND HUMAN SERVICES • National Institutes of Health