

# NCI CCR Fellows and Young Investigators Association

Kate M. McGee<sup>1</sup>, Christian M. Capitini<sup>2</sup>, Krista Zanetti<sup>3</sup>, James Gould<sup>1</sup> and Jonathan S. Wiest<sup>4</sup>

<sup>1</sup>Laboratory of Experimental Immunology, <sup>2</sup>Pediatric Oncology Branch, <sup>3</sup>Laboratory of Human Carcinogenesis and <sup>4</sup>Office of Training and Education, Center for Cancer Research.



## About the CCR-FYI

The CCR Fellows and Young Investigators (CCR-FYI) Steering Committee was formed by fellows with a mission to provide support and advocacy for postdoctoral and clinical fellows as well as young investigators at the NCI in all aspects of their training and career development. We are supported by the CCR Office of Training and Education and its Director, Jonathan Wiest. All CCR fellows are automatically included in the CCR-FYI and it only takes coming to our meetings on the last Thursday of every month to become a member of the Steering Committee. We have outstanding fellows that are active in various ways within our four subcommittees.

The **Retreat/Colloquium Subcommittee** is responsible for organizing our annual offsite colloquium for the entire NCI CCR trainee community.

The **Community Life Subcommittee** includes six subgroups that provide support in the mission of promoting interaction among CCR fellows on an academic, social and cultural basis. We write, edit, and produce a quarterly Newsletter that is responsible for informing fellows of activities, campus developments and relevant issues. We maintain a website that includes important information regarding our committee including member contacts, minutes and by-laws. We organize quarterly social events for the Steering Committee, as well as CCR fellow community at-large. We have representatives from our committee that attend and assist the CCR Office of Training and Education with new fellow orientations on both campuses to introduce the CCR-FYI and life at the NCI. We also have members appointed as liaisons to both the NIH Fellows Committee (FelCom) and the National Postdoctoral Association (NPA) of which, NCI is a sustaining member.

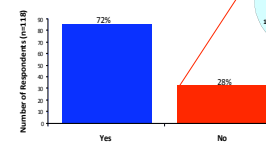
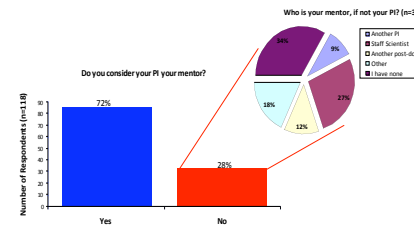
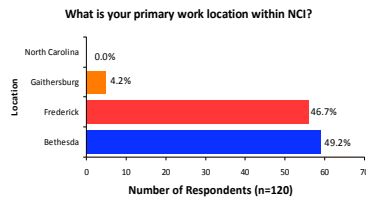
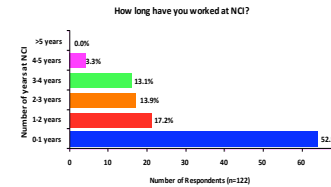
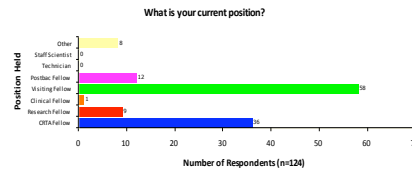
The **By-Laws and Policy Subcommittee** is responsible for maintaining and updating the rules and guidelines that comprise our charter and mission.

The **Scientific Subcommittee** is responsible for both the Postdoctoral Seminar Series in Bethesda (PASS) and Frederick along with presenting the results of the annual survey to the NCI Office of the Director, Intramural Advisory Board, and Principle Investigators.

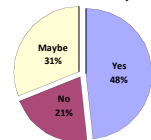
The **CCR-FYI Steering Committee** acts as the liaison between the CCR Office of the Director, the CCR Office of Training and Education, and the postdoctoral community while representing the interests of postdoctoral trainees to the NCI and the CCR.

## 9<sup>th</sup> Annual Colloquium Survey

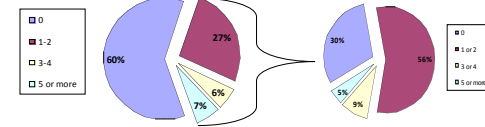
The 9<sup>th</sup> Annual Fellows Colloquium in Hershey, PA was held March 18-20, 2009. The CCR-FYI Steering Committee conducts an annual survey of trainees who attend the CCR-FYI Colloquium in order to gather data for current trainees in three main areas: demographics, current NCI/CCR fellowship, and family/life considerations. The purpose is to provide information to the CCR leadership for improving the training and mentoring of our trainee population.



## Would you be interested in multiple mentors for scientific and career advice? (n=116)



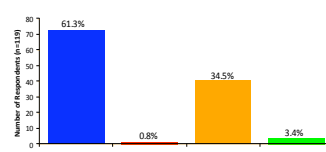
## In your current fellowship position, how many peer-reviewed publications do you have? (n=120)



## Of these, how many 1st author papers do you have? (n=43)



## Are you learning the skills you need to develop your career? (n=118)



## 2009 Survey Results

- The majority of trainees felt that they were learning the skills needed to develop their career at least some of the time.
- Almost half of trainees were interested in multiple mentors for scientific and career advice.
- Seventy two percent of fellows considered their PI to be their mentor.
- Forty percent of respondents had at least one peer-reviewed publication while at the NCI. The low number may be due to the fact that over half of the trainees were within their first year of training.
- Nearly 3/4 of trainees completed an Initial Training Plan while only 2/3 completed a subsequent Training Plan Update.
- Nearly all survey respondents would recommend CCR/NCI to a colleague; whereas only 78% would recommend their current laboratory.

**NCI Center for Cancer Research**

**FELLOWS & YOUNG INVESTIGATORS**

THE NCI CCR Fellows and Young Investigators Association is... designed to support, advocate for, and represent the interests of fellows and young investigators in all aspects of their professional training and career development.

**WHO can participate?**

- Postdocs/CRFAs
- Clinical Fellows
- Research Fellows
- Postbaits
- Staff Scientists
- Technicians
- Students
- any young investigator

**WHAT can the CCR-FYI do for you?**

**Network** with other fellows and young investigators at our Annual Colloquium. **Units** with the CCR Office of the Director, CCR Office of Training and Education, NIH Fellows Committee (FelCom), NIH Office of Intramural Training and Education (OITE), and National Postdoctoral Association.

**HOW to get involved?**

**Attend** Steering Committee monthly meetings and join a subcommittee.

**Suggest** speakers for the annual retreat and the CCR Grand Rounds.

**Submit** articles to the CCR-FYI newsletter.

CCR-FYI Steering Committee	Seminar Series
<ul style="list-style-type: none"> <li>• Want to have your opinions heard?</li> <li>• Want to help make CCR training a rewarding experience for all?</li> <li>• What to be a part of planning the next Fellows Colloquium?</li> </ul> <p><b>Monthly Meetings:</b> Last Thursday of the Month @ 11a-12p <b>Bethesda:</b> Bldg 40, Rm 1201/1203 <b>Frederick:</b> Bldg 549, Conference: Rm B</p> <p style="font-size: x-small; text-align: center;">Supported by the CCR Office of Training and Education and the CCR Office of the Director <a href="http://ccr.cancer.gov/careers/fellows/default.aspx">http://ccr.cancer.gov/careers/fellows/default.aspx</a></p>	<p><b>Bethesda CCR Fellows' PASS</b> (Postdoctoral Seminar Series) A bi-weekly career development seminar series that runs as needed.</p> <p><b>NCI-Frederick Postdoc Seminar Series</b> Alternating Wednesdays at 1:30 p.m. Bldg 549 Auditorium</p> <p>These series provide an environment for CCR scientists to practice their presentation skills, whether they be geared toward conferences or job interviews, and get constructive feedback.</p>

# 2010

## 10<sup>th</sup> Annual CCR-FYI Colloquium

March 17 - 19, 2010
Hershey, PA

## 10<sup>th</sup> Annual CCR-FYI Colloquium

The 10<sup>th</sup> Annual Fellows and Young Investigators Colloquium will be held Wednesday, March 17, 2010 through Friday, March 19, 2010 and is open to all NCI Fellows and Trainees, including Postdoctoral Fellows, Clinical Fellows, Post-baccalaureate Fellows, and Graduate Students. All postdocs and trainees who have been at NCI for at least a year are strongly encouraged to submit an abstract. A number of outstanding abstracts will be chosen for oral presentation. All other abstracts will be presented as posters. Travel Awards will be given out for prejudged abstracts based on the quality of the abstract and presentation.