

**Update from the
REiNS Imaging Working Group**

**Combined
Whole Body MRI and Tumor Imaging**

Shivani Ahlawat (Hopkins)

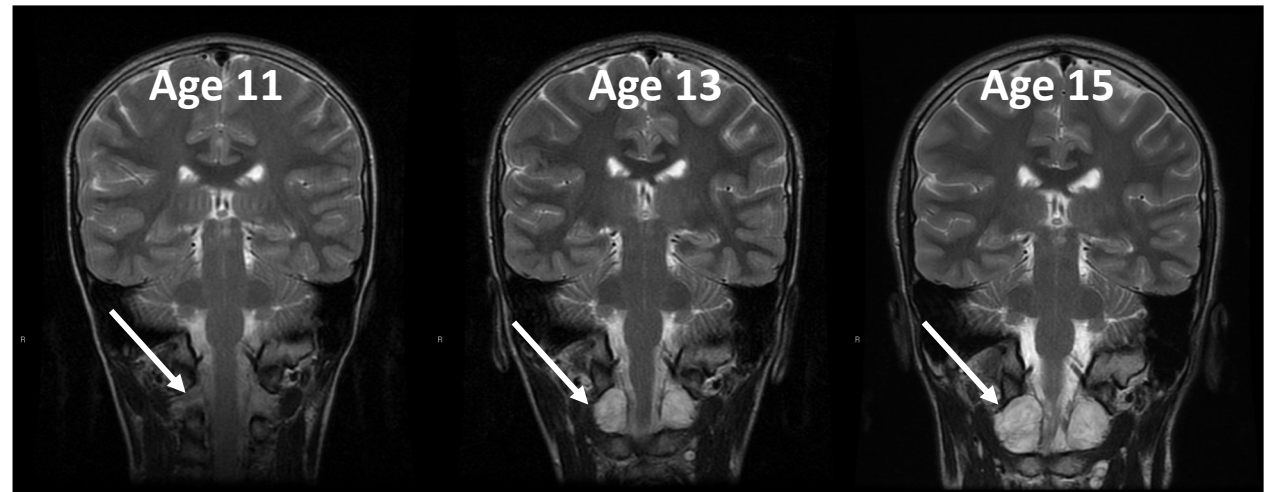
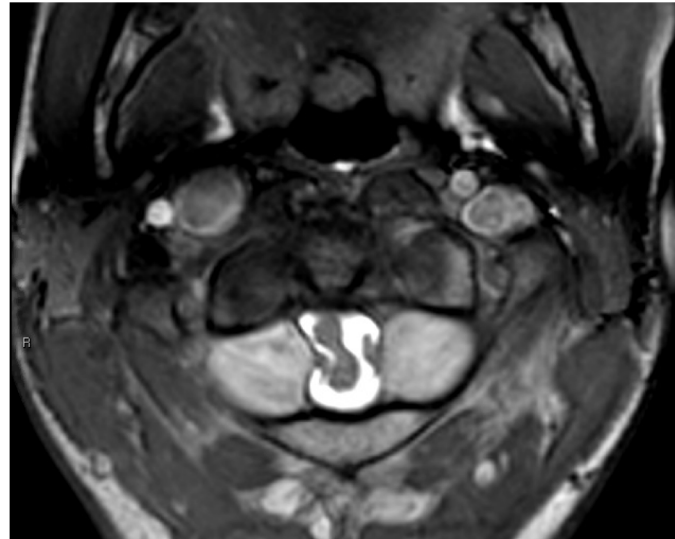
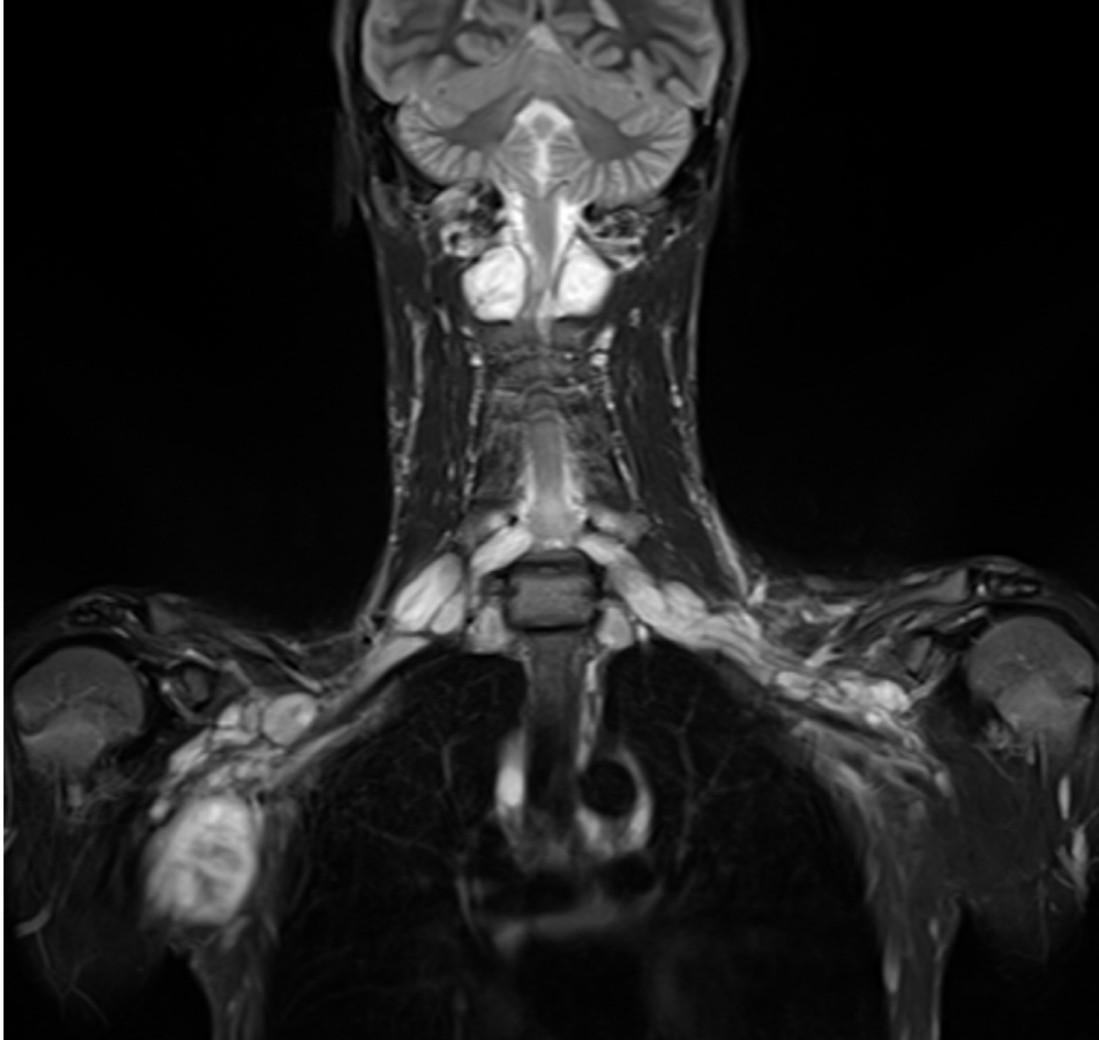
Eva Dombi (NCI)

Current focus

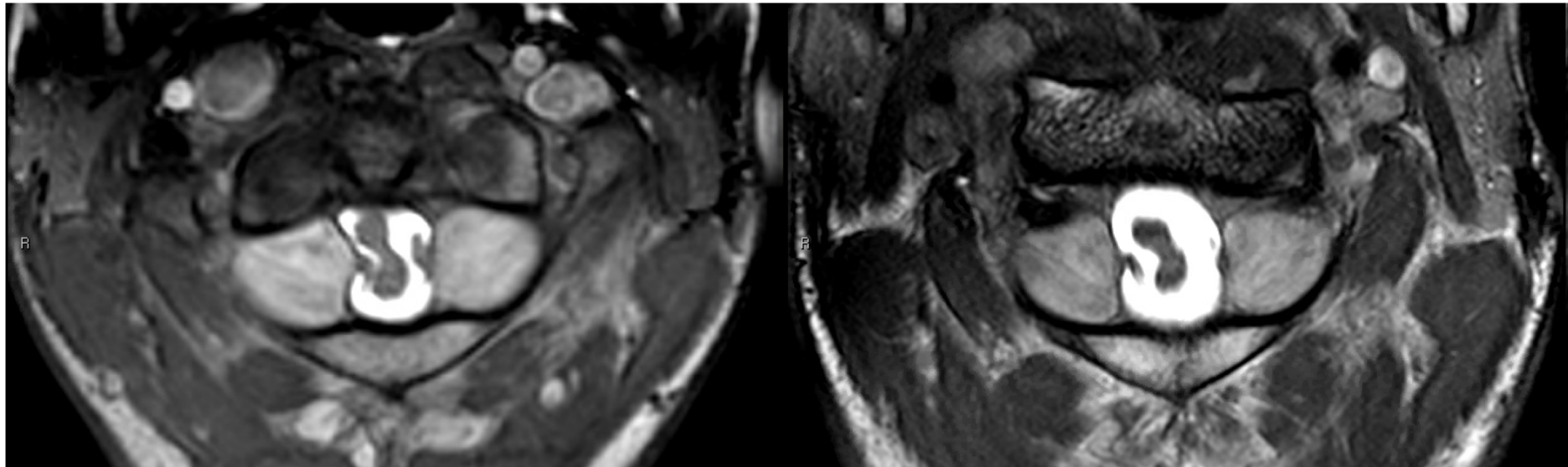
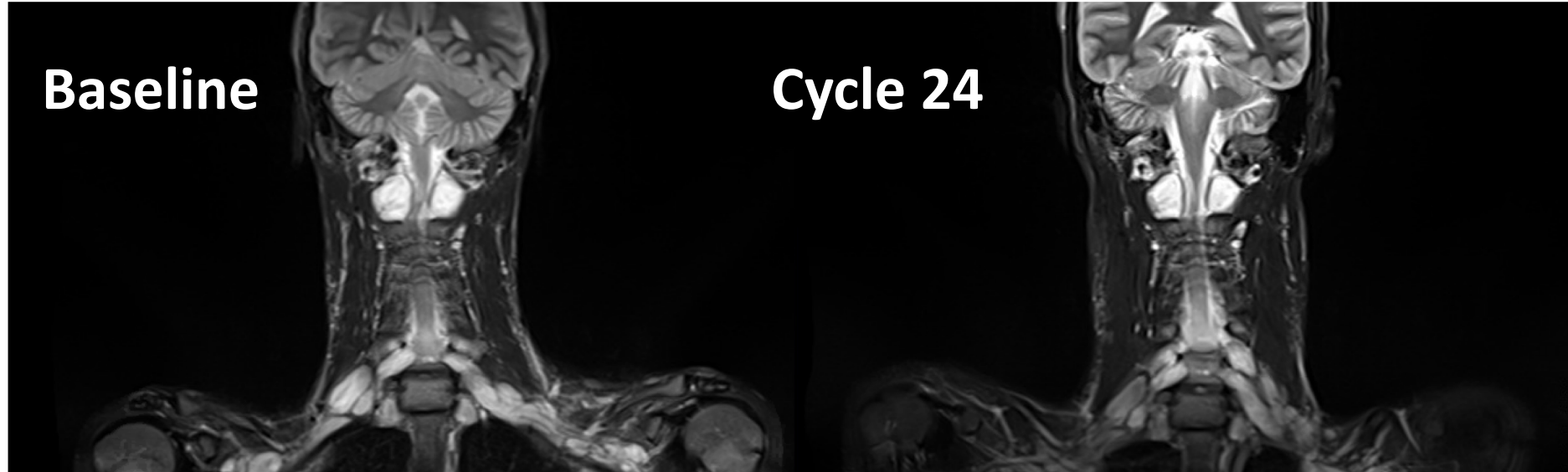
- **Implementation of MRI standards for volumetrics**
- **Volumetric method validation: MEDx vs. 3DQI vs. other**
- **Spinal neurofibroma assessment method**
- **NF-ANF-MPNST transformation**

Quantifying change in SNF

Why bother?

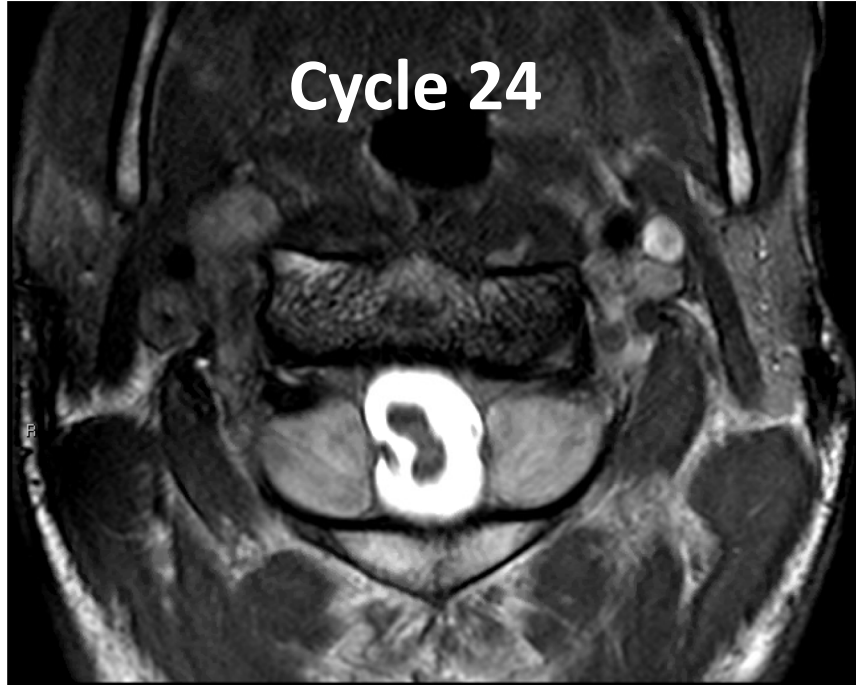


Example of treatment effect on SNF

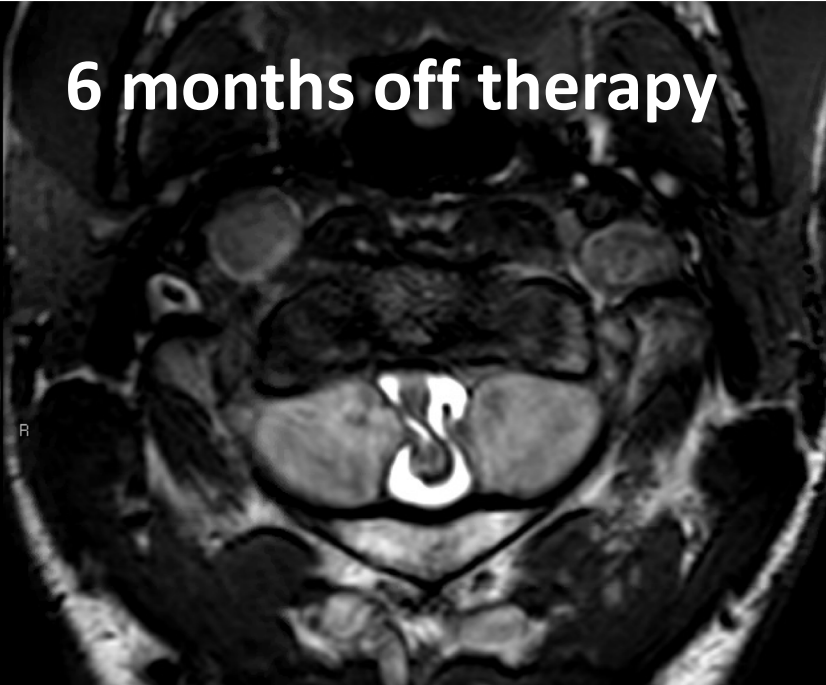


The need for surgical intervention *may be reduced by medical therapy*

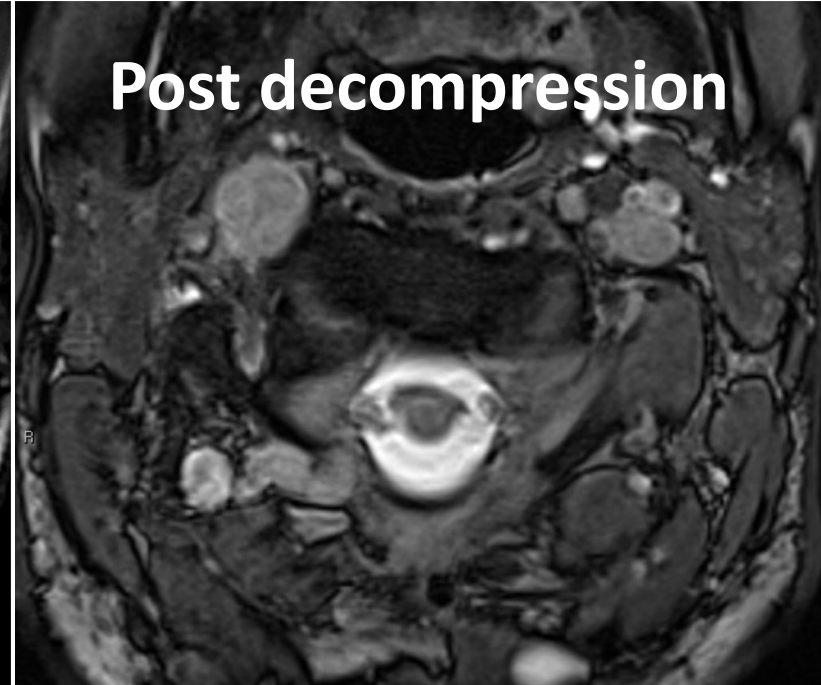
Cycle 24



6 months off therapy

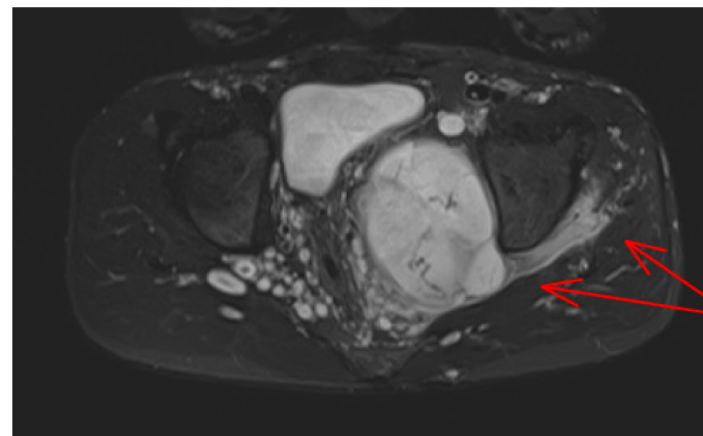
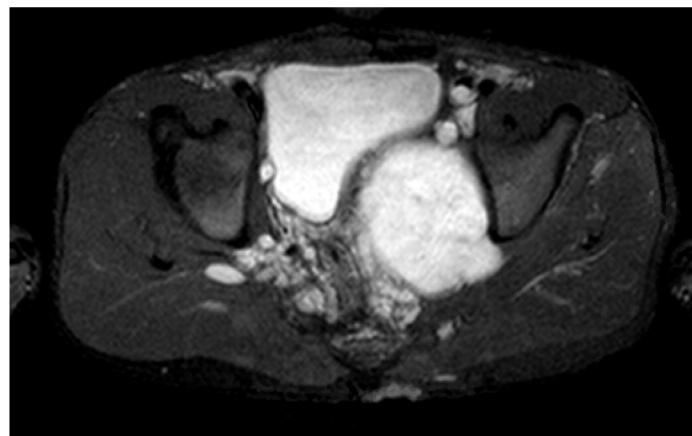
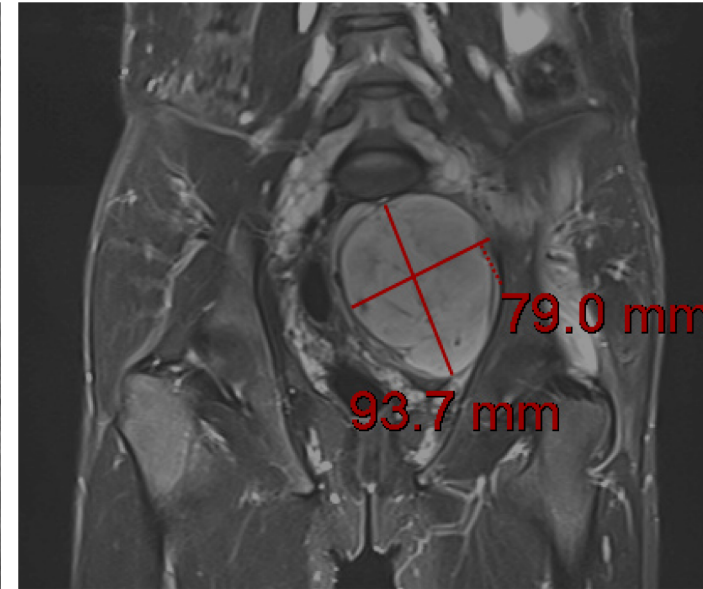
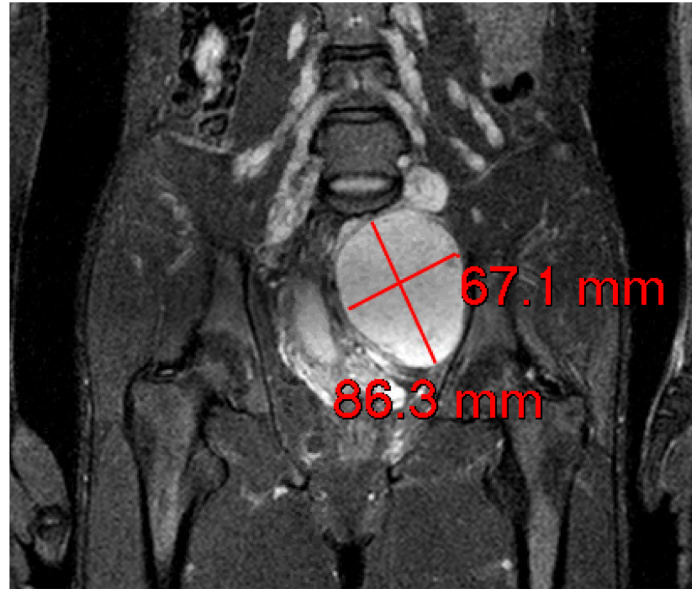


Post decompression



NF-ANF-MPNST transformation

Increase in lesion size



NF-ANF-MPNST transformation

Increase in metabolic activity

Age 16

Age 17

Age 18

