

Visual Outcomes Committee

- Michael Fisher
- Jeff Allen
- Simone Ardern-Holmes
- Rob Avery
- Larissa Bilaniuk
- Peter de Blank
- Miriam Bornhorst
- Ros Ferner
- David Gutmann
- Bob Listernick
- Grant Liu
- Staci Martin
- Sarah Milla
- Neha Patel
- Nicky Ullrich

Initial REiNS Recommendations

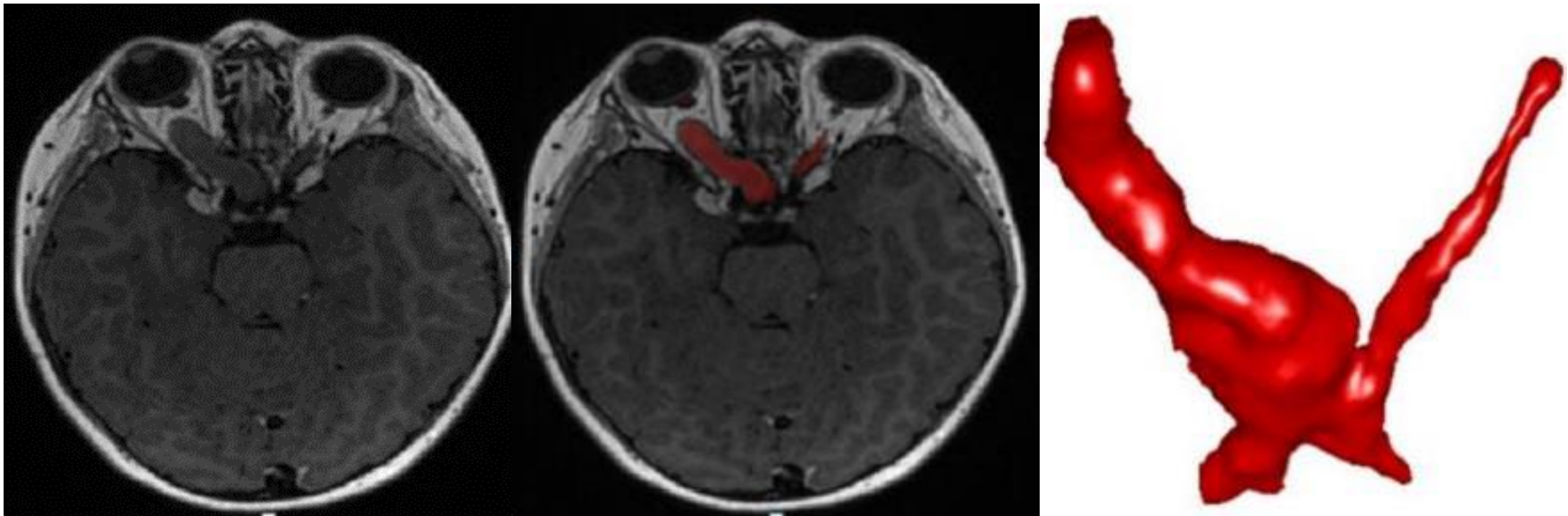
- Primary Outcome Measure
 - VA using Teller Acuity Cards
 - Don't switch formats
 - Report in logMAR
 - Account for age-specific acuity norms
- Secondary Outcome Measures
 - VA using HOTV
 - Visual QOL using CVFQ
- Contributing Variable
 - Optic Pallor

Ongoing Work / Future Directions

- An improved understanding of Visual Fields in OPG
- How to best measure OPGs
 - 2D vs 3D measurements
 - How do you evaluate tumor extent in the setting of UBOs?
- What constitutes an OPG?
 - How thick must the nerve be?
- Biomarkers of Vision
 - OCT
 - DTI

Automated MRI Segmentation of the Anterior Visual Pathway

- Algorithm developed for the optic nerve

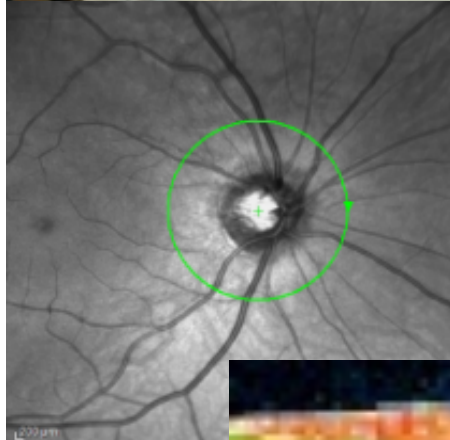


- Limitation: Segmentation beyond the optic chiasm is problematic
 - Irregular shape of tumors
 - Unidentified bright objects

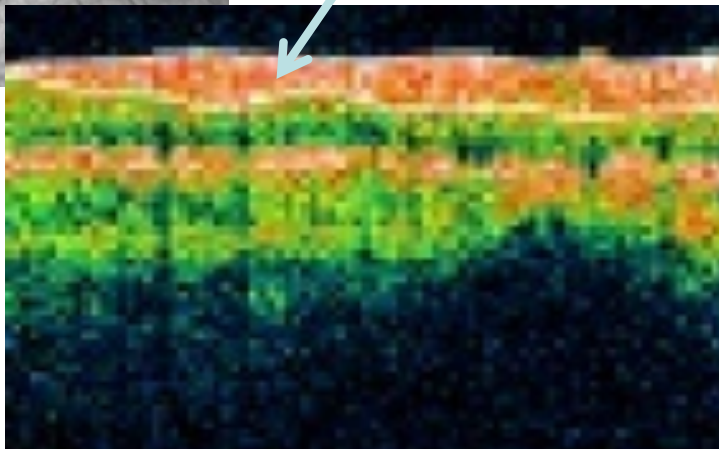
Is there a marker that can predict or is associated with vision loss?



OCT



RNFL



DTI

